

CONTENTS

- A. 1 Yummiland Truck™ with removable straw and whipped cream mixing bowl
- B. 1 Bowl with lipgloss base
- C. 1 Spoon
- D. 2 Bottles of colored scents
- E. 1 Waffle cone Ice Cream Container
- F. 1 Cupcake Container



⚠ WARNING

- For use under adult supervision.
- Read the instructions before use, follow them and keep them for reference.
- Not suitable for children under 4 years.
- Keep the kit out of reach of children under 4 years old.
- Wash hands thoroughly after use.
- DO NOT apply lip gloss around eyes. Only apply lip gloss to the lip area.
- Avoid direct contact with eyes. If this occurs, flush with water immediately. If inflammation occurs or pain persists, seek medical advice.
- Cosmetics should not be used for purposes other than those listed in these instructions.
- Cosmetics are for external use only. Discontinue use if signs of irritation or rash appear.
- Do not use on broken skin.
- These cosmetics are laboratory tested and safe for use as prescribed. As with all cosmetics, some individual skin types may experience minor skin irritation to ingredients. If skin rash, irritation, sensitization or other allergic reactions occur, discontinue use immediately and seek medical advice.
- Do not ingest or inhale any of the cosmetics or contents included in this package.
- If swallowed: Wash out mouth with water and drink some fresh water. Do not induce vomiting. Seek immediate medical advice.

IMPORTANT INFORMATION

- Protect and cover surrounding surfaces before use to prevent possible damage or staining. Color transfer may occur.
- Products may damage or stain certain fabrics, carpeting, wood finishes, or other porous and polished surfaces.
- Keep paper towels handy for cleaning up spills, wiping fingers, etc.
- Store lip gloss and ingredients in a cool, dry environment.
- Thoroughly wash, rinse and dry containers after they have been used.
- Wash hands before and after using cosmetics.
- Tightly close all lids and caps after use.
- Do not dispose of lip gloss in the drain. Dispose in a trash receptacle once you are finished using it.
- Discontinue use if lipgloss has been left opened for a long period of time or if it has gotten dirty.
- Do not leave cosmetics in direct sun or in very hot areas.
- Clean all parts before customize their lip gloss.

Illustrations are for reference only. Styles may vary from actual contents.

Please remove all packaging including tags, ties & tacking stitches before giving this product to a child.



0424-0-E
Printed in China

©2024 MGA Entertainment, Inc.
YUMMILAND™ is a trademark of MGA in the U.S. and other countries. All logos, names, characters, likenesses, images, slogans, and packaging appearance are the property of MGA.

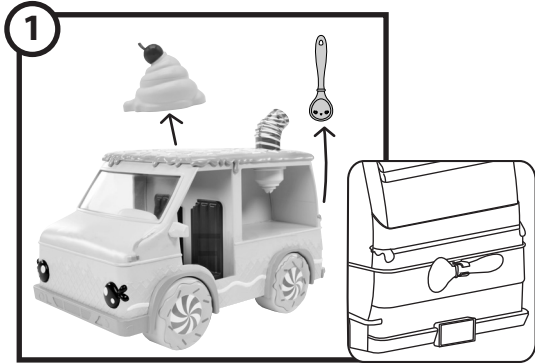
MGA Entertainment, Inc.
9220 Winnetka Ave. Chatsworth, CA 91311
U.S.A.
(800) 222-4685

The preferred method of contact for
Customer Service is through our e-mail
contact form at www.mgae.com

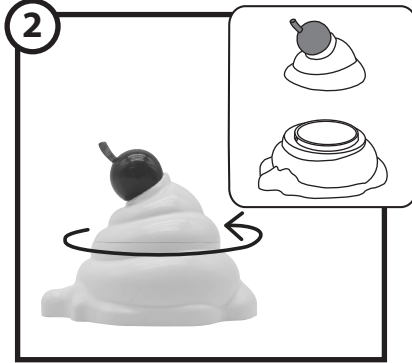
QUICK START:

Before beginning, wash and dry hands thoroughly, then cover the play area to prevent possible damage.

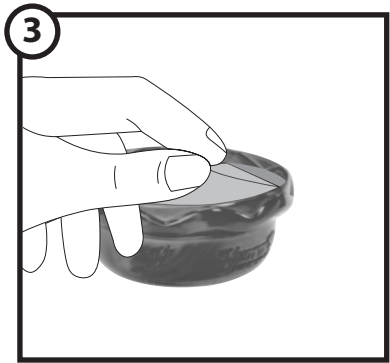
NOTE: Contents of this kit may not be used to create items for resale.



Remove the whipped cream mixing bowl and spoon from the truck.



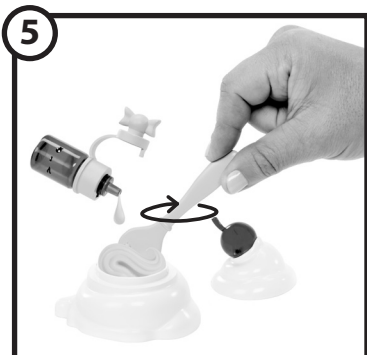
Carefully twist the whipped cream mixing bowl counterclockwise to open.



Peel off the seal of the lip balm base holder.



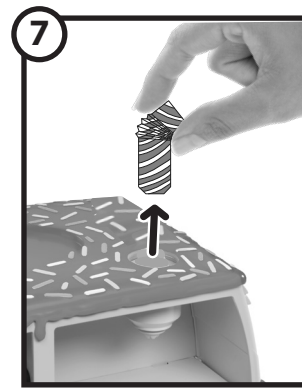
Scoop the lip balm base into the mixing bowl.



Carefully add 2-3 drops of the scented liquid into the mixing bowl and mix..
Note: The more drops you add, the more fragrant your lip balm will be.



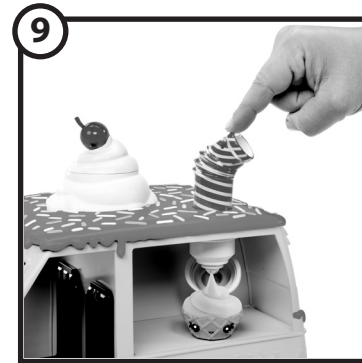
Open the lip balm container at the hinge and place it under the dispenser on the truck.



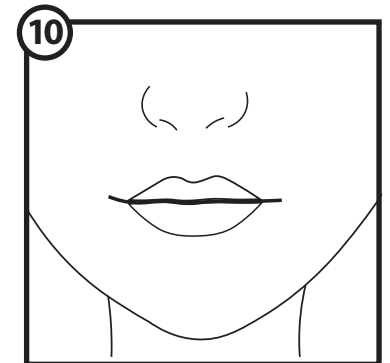
Remove the straw from the top of the truck.



Scoop out the lip balm mixture into the dispenser opening at the top of the truck.



Press the straw into the dispenser to dispense the lip balm mixture into the container.



Apply lip balm over clean lips. Remove the lip balm with water and a damp, clean towel (not included).

Cleaning

1. Remove the straw plunger.
2. Twisting clockwise, remove the dispenser cap on the truck.
3. Use a paper towel with mild soap and water to clean out the dispenser and accessories. Paper towel not included.
4. Once cleaned replace the dispenser cap and straw plunger

